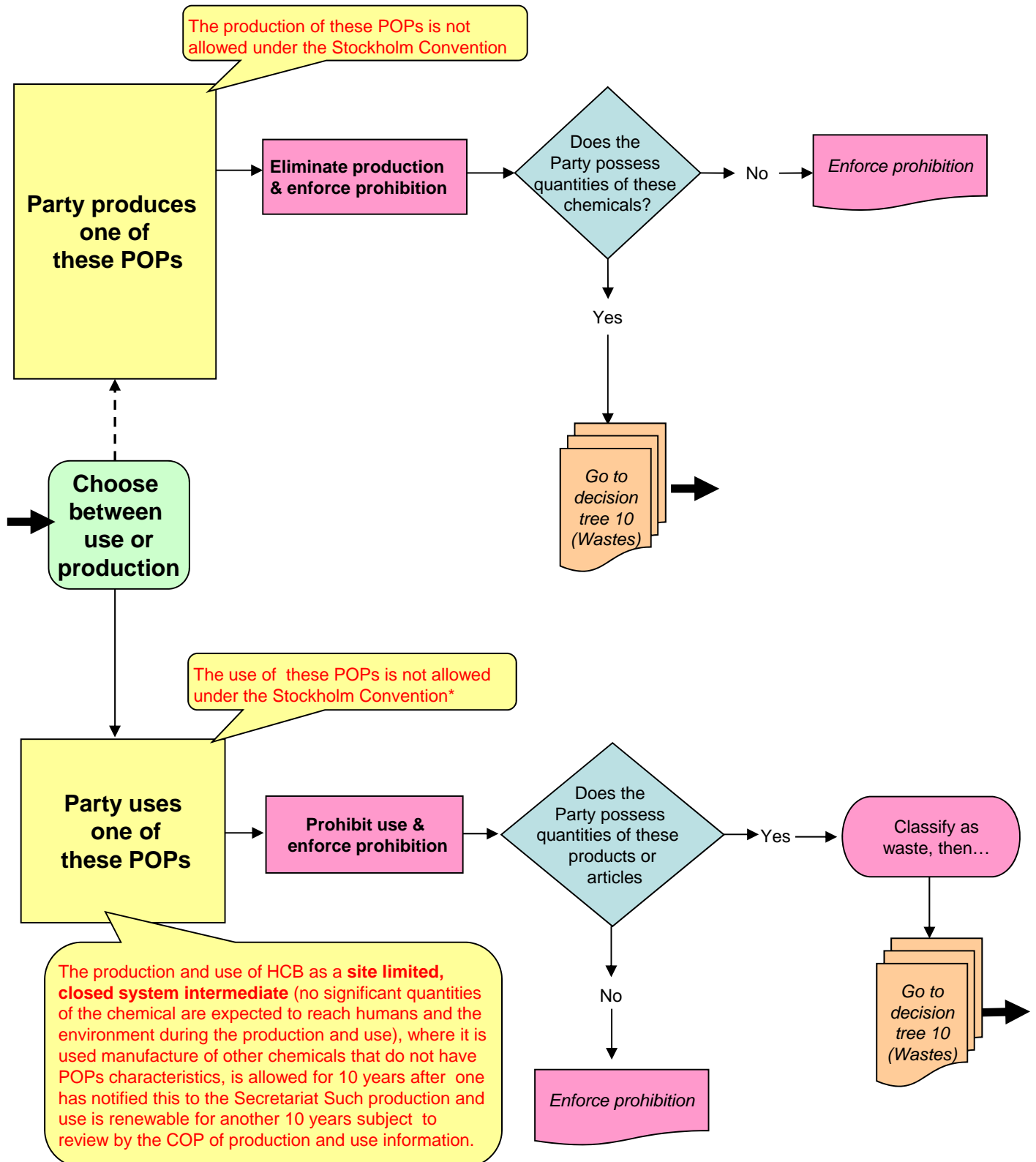
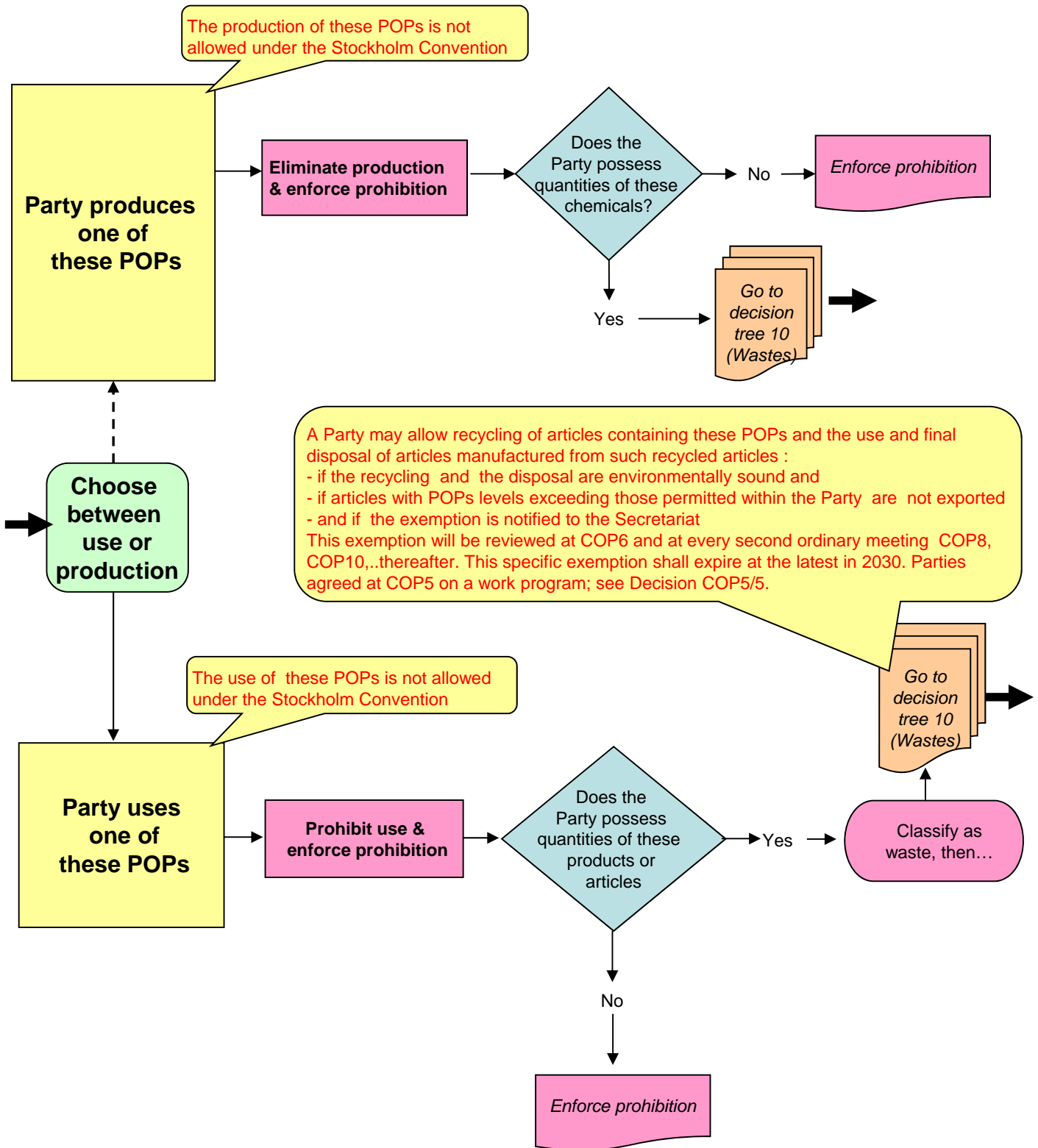


1. Intentionally produced POPs:

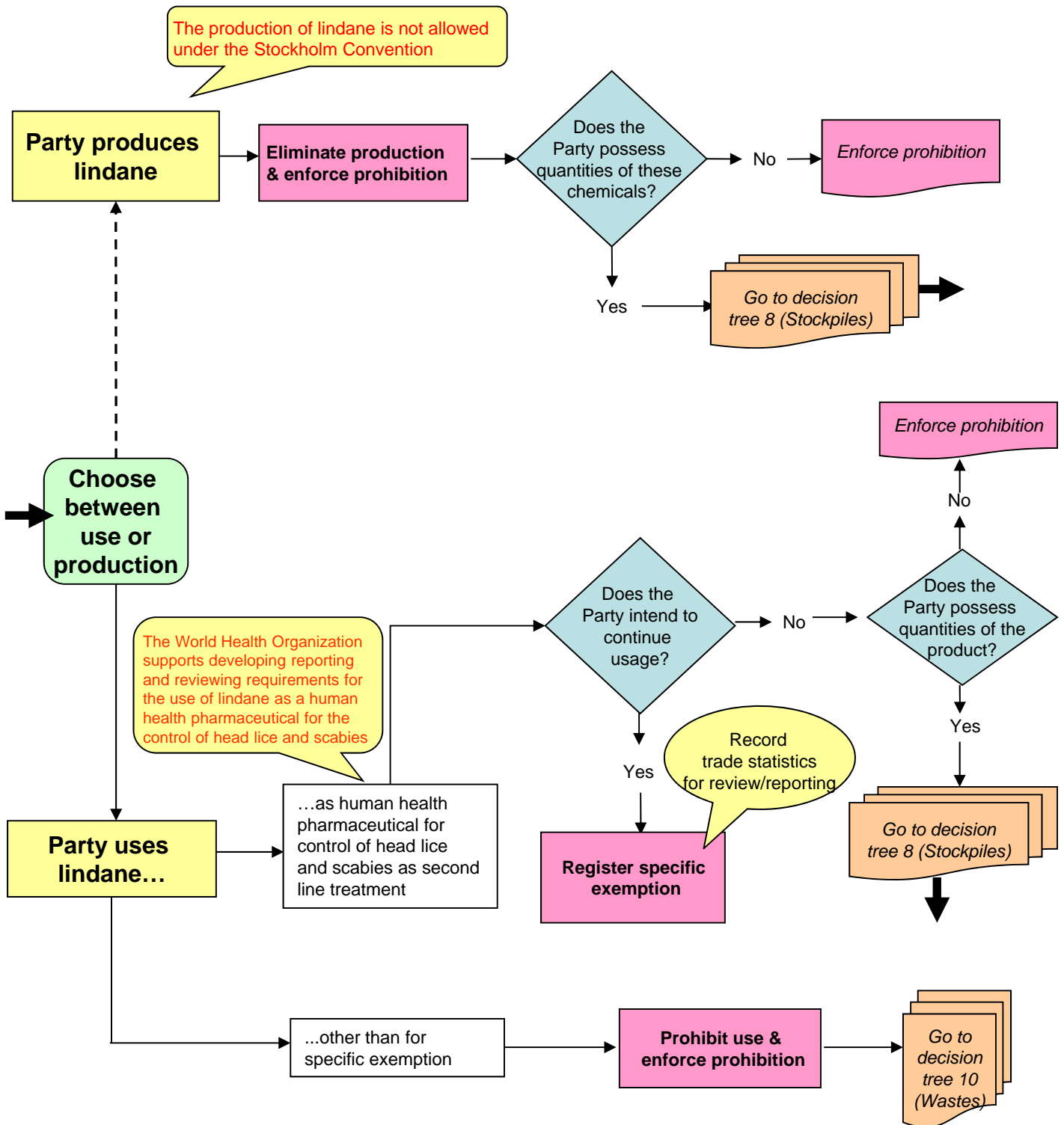
aldrin, alpha HCH, beta HCH, chlordane, chlordecone, dieldrin, endrin, heptachlor, hexabromobiphenyl, HCB, mirex, pentachlorobenzene, toxaphene



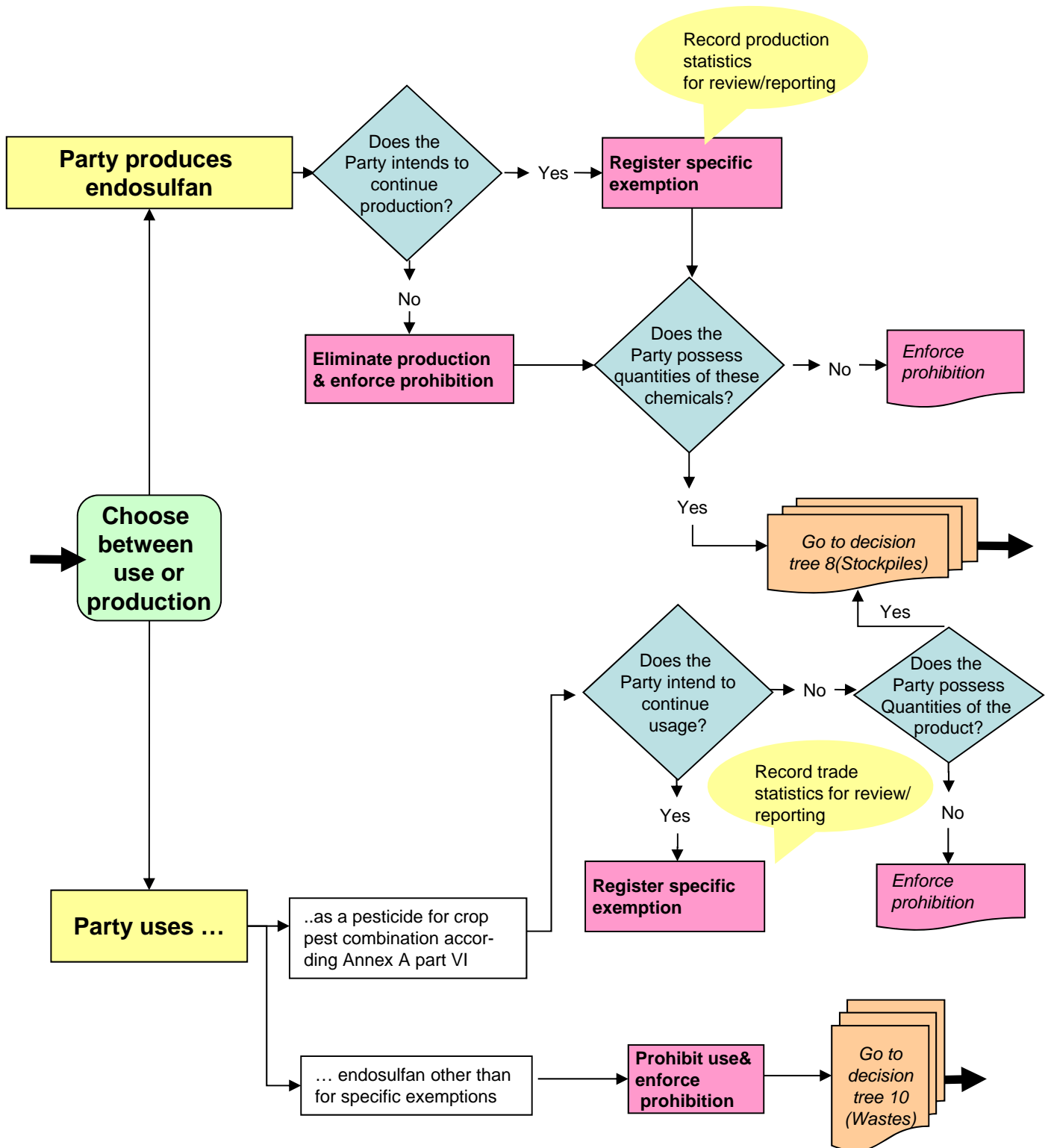
2. Intentionally produced POPs:
*tetraBDE and pentaBDE (commercial PentaBDE),
 hexaBDE and heptaBDE (commercial OctaBDE)*



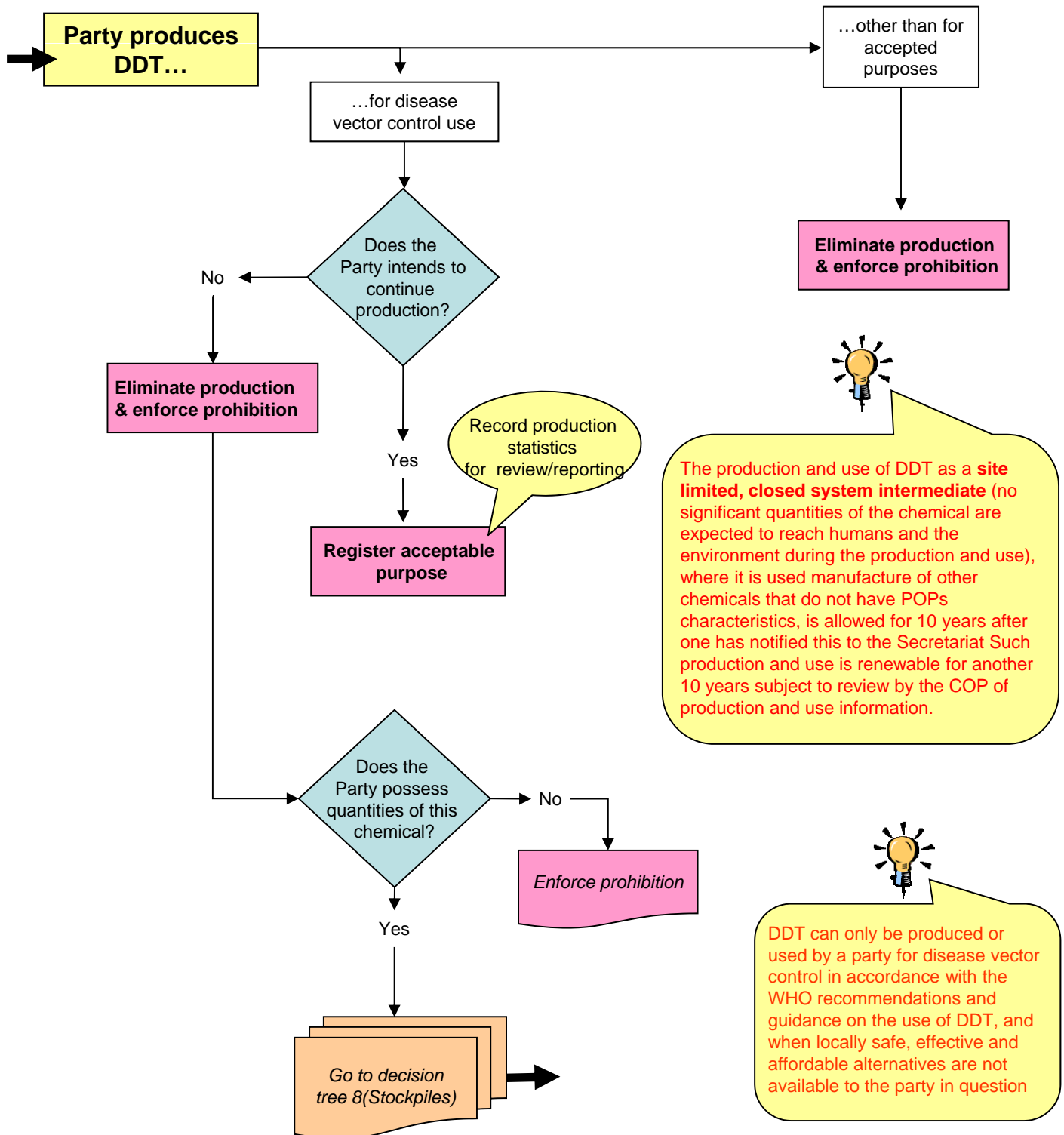
3.1 Intentionally produced POPs with specific exemption: *lindane*



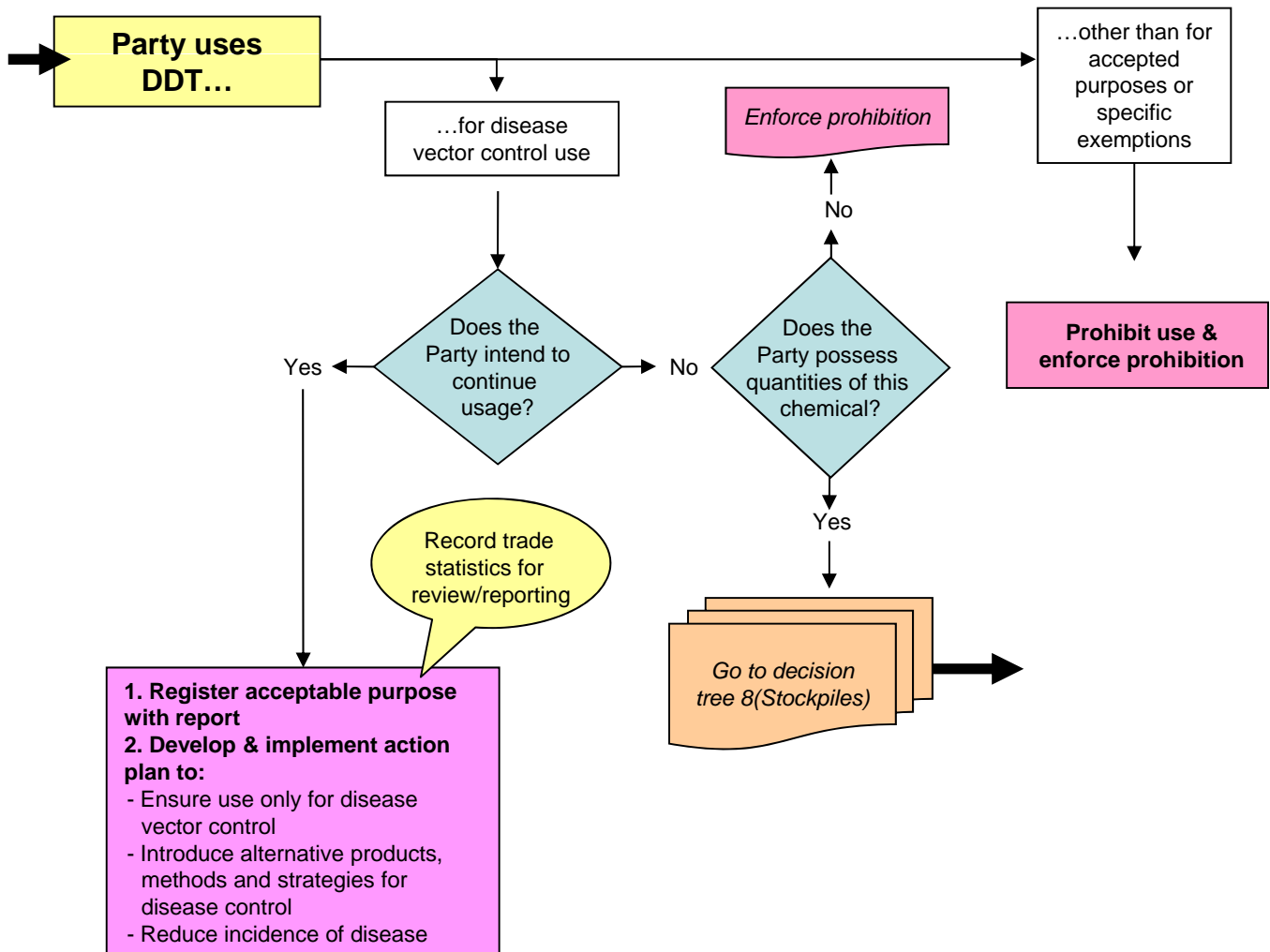
3.2 Intentionally produced POPs with specific exemption: *endosulfan*



4.1 Intentionally produced POPs: DDT production



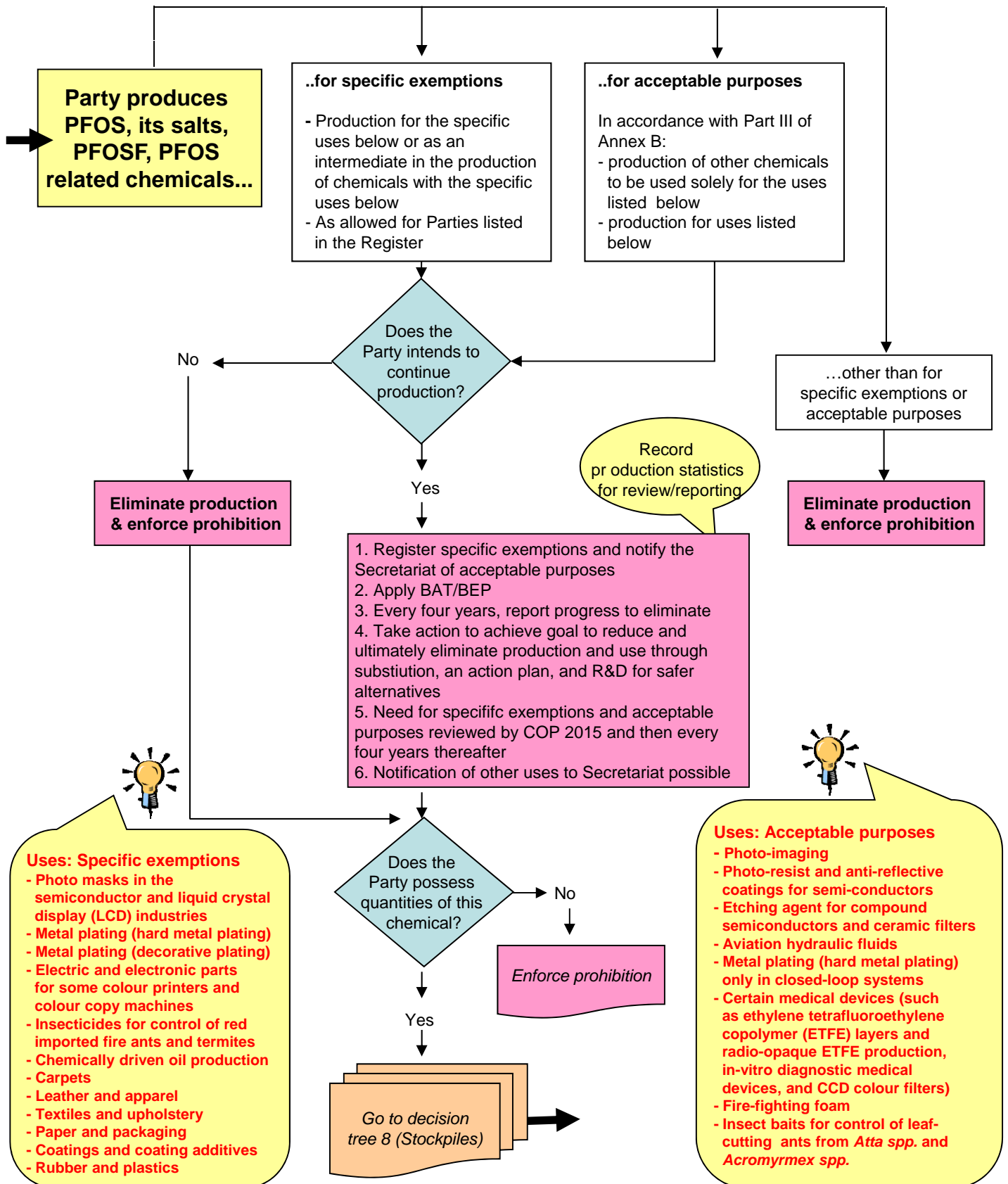
4.2 Intentionally produced POPs: DDT use



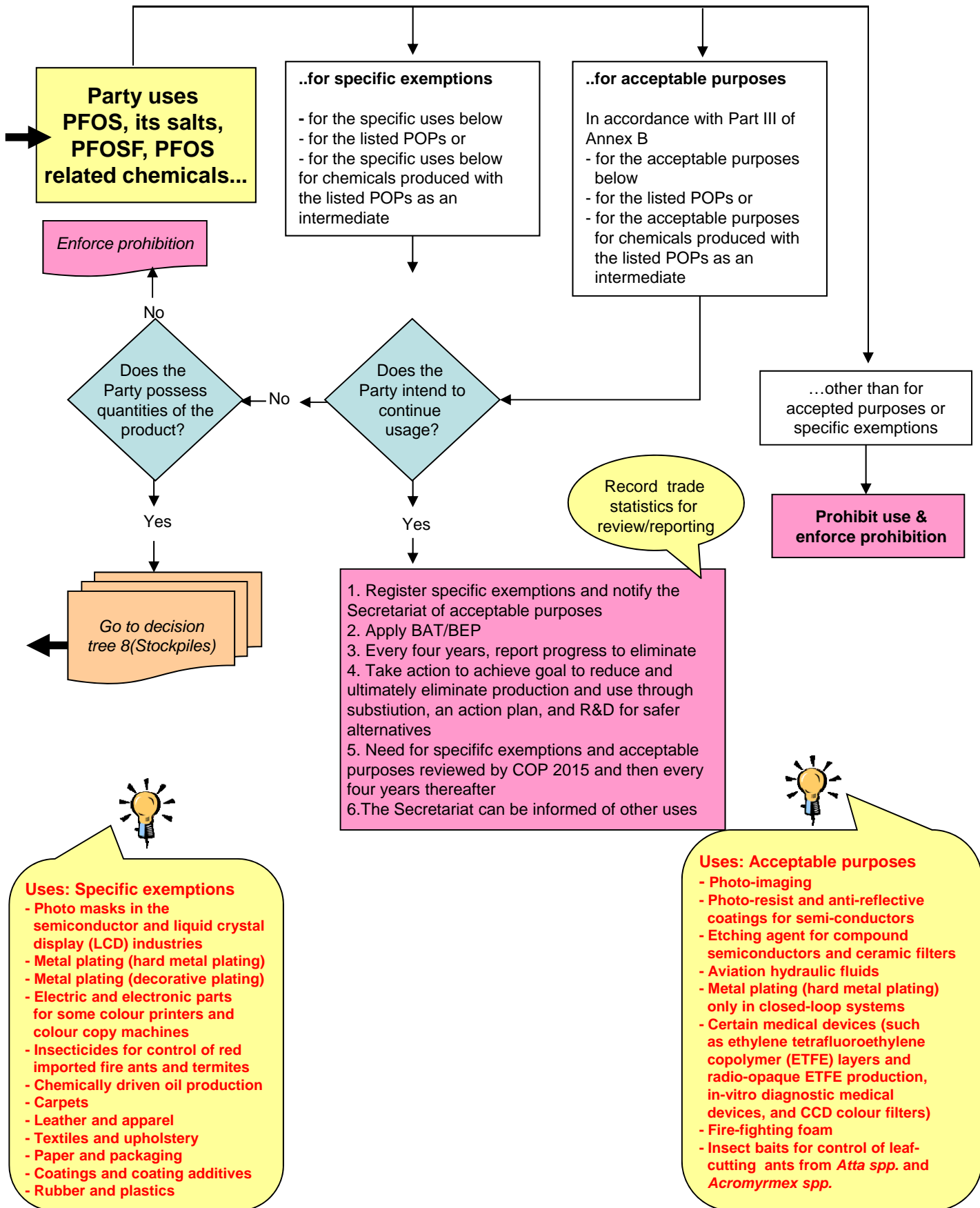
DDT can only be produced or used by a party for disease vector control in accordance with the WHO recommendations and guidance on the use of DDT, and when locally safe, effective and affordable alternatives are not available to the party in question

5.1 Intentionally produced POPs:

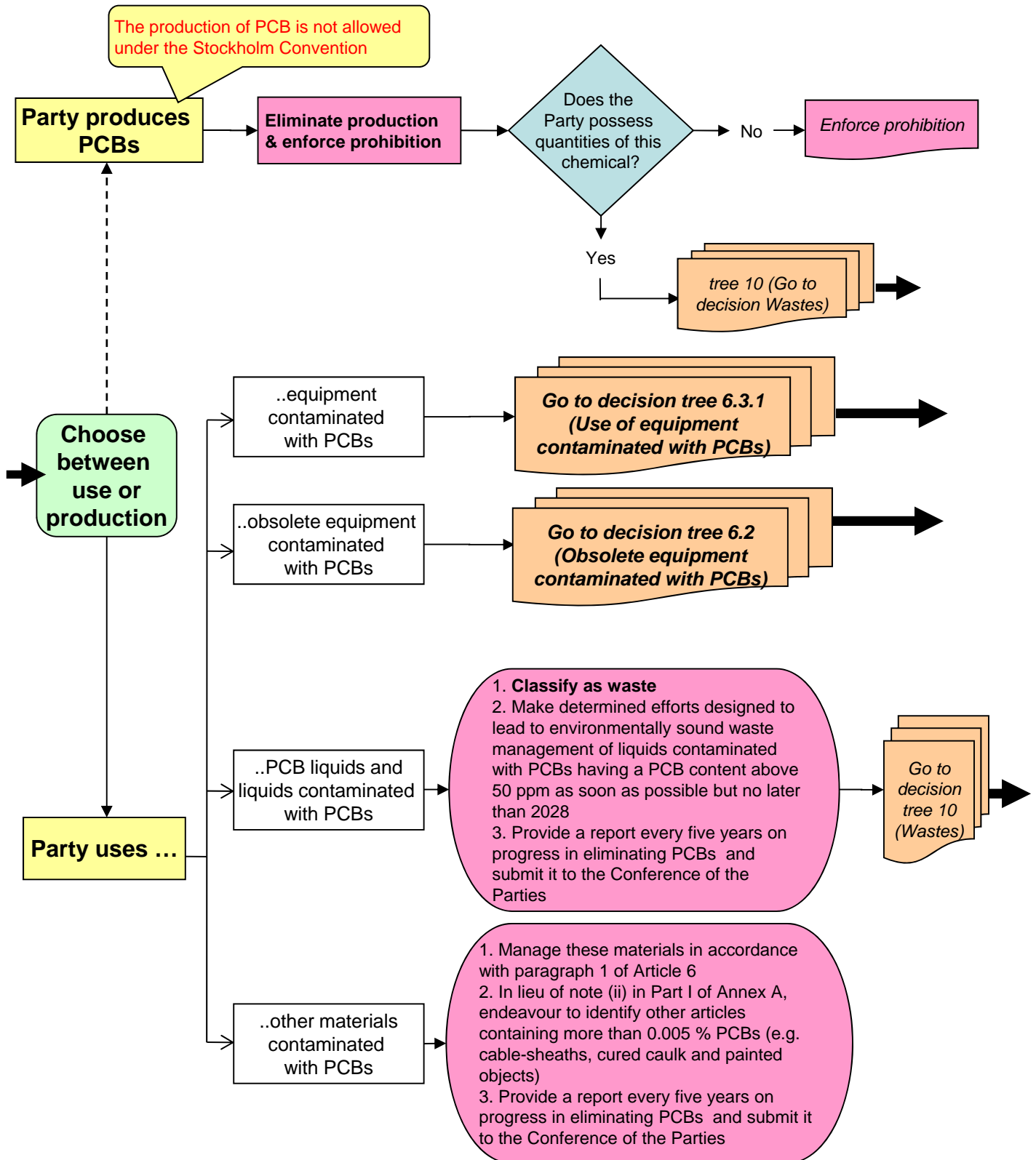
PFOS, its salts, PFOSE, PFOS related chemicals - production



5.2 Intentionally produced POPs: PFOS, its salts, PFOSF, PFOS related chemicals - use

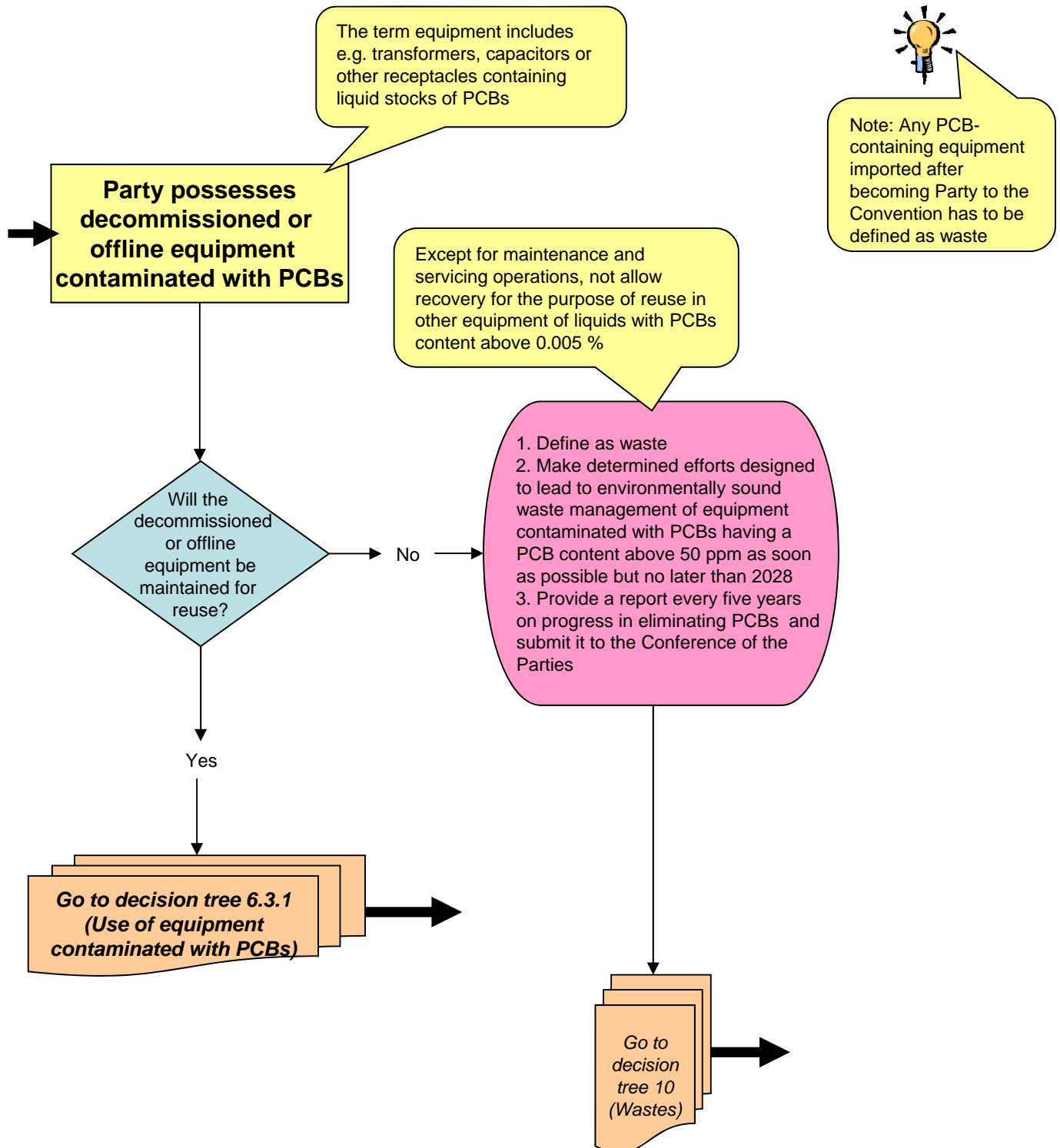


6.1 Intentionally produced POPs: PCBs

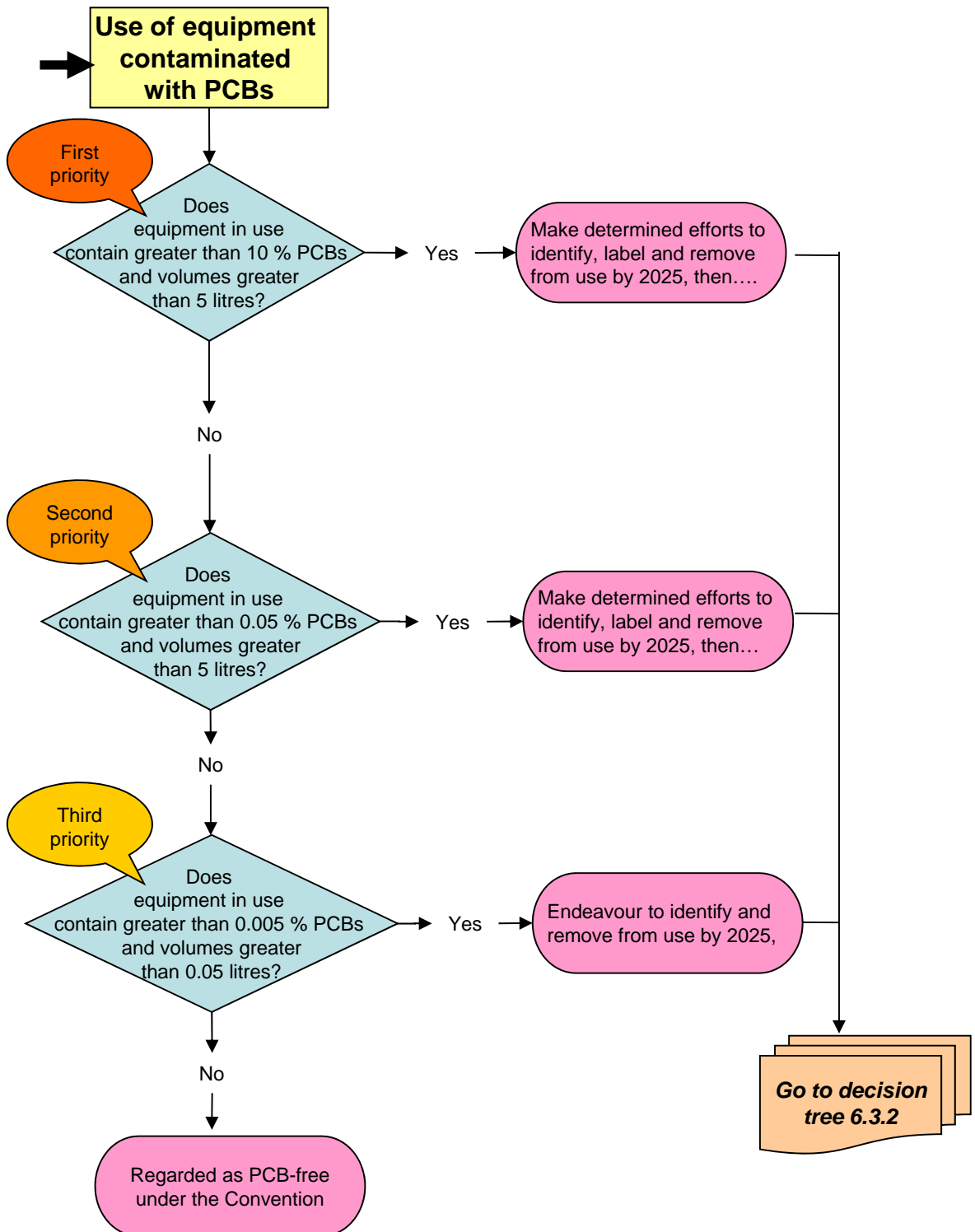


6.2 Intentionally produced POPs:

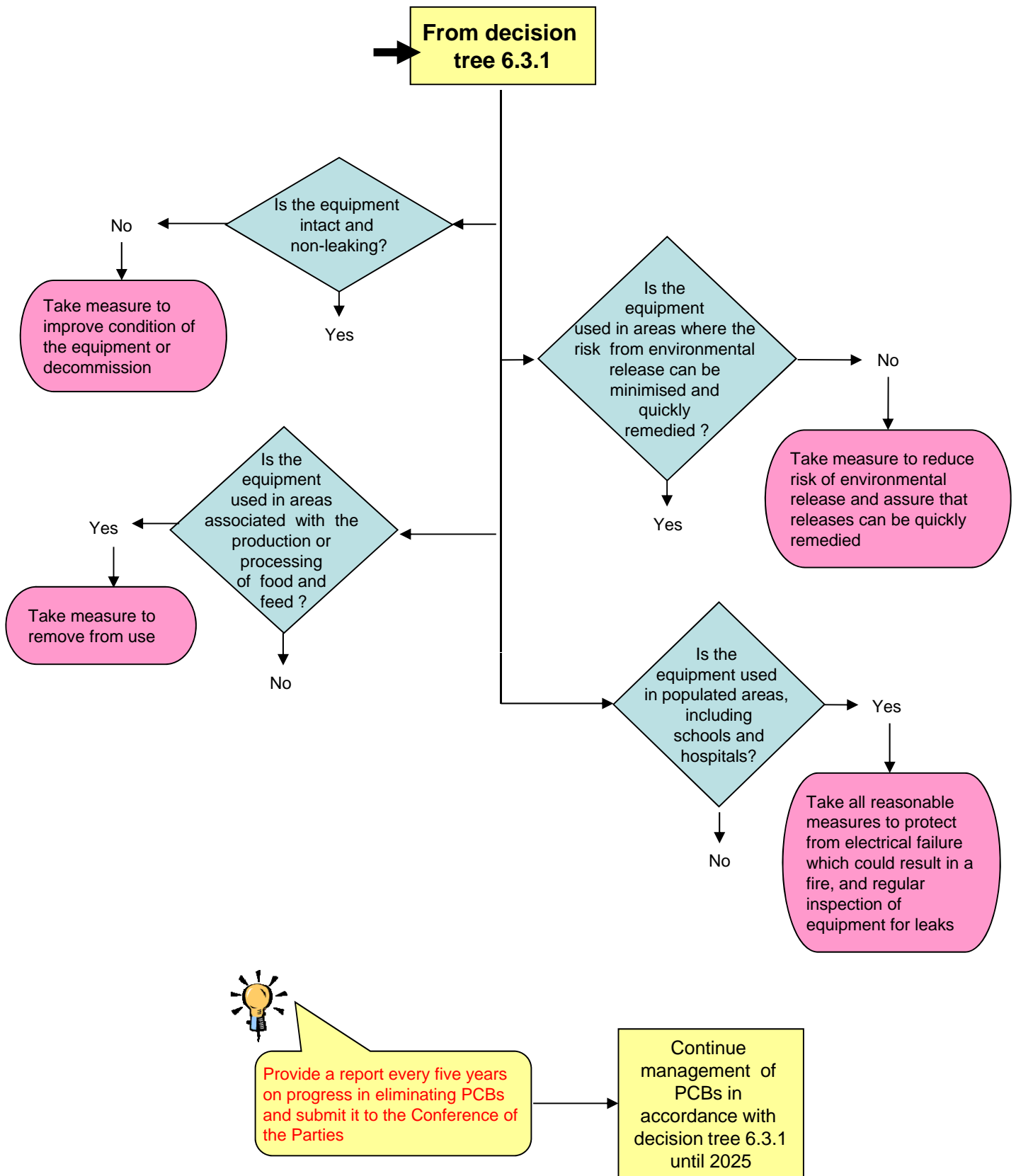
PCBs (Decommissioned or offline equipment contaminated with PCBs)



6.3.1 Intentionally produced POPs: *PCBs (Use of equipment contaminated with PCBs)*



6.3.2 Intentionally produced POPs: PCBs (Use of equipment contaminated with PCBs)



7. Unintentionally produced POPs *HCB, pentachlorobenzene, PCBs, PCDDs/PCDFs*



Unintentional Production

Use the UNEP-developed Toolkit to prepare a preliminary inventory of unintentional production of POPs. Identify, important national sources of such releases and rank them. Evaluate the efficacy of laws and policies relating to the management of unintentional releases of POPs

Objective: To reduce the total releases derived from anthropogenic sources with the goal of their continuing minimisation and, where feasible, ultimate elimination

Does the inventory identify as priorities facilities or industries listed in Annex C part II?

Yes

Are new installations or substantial modifications of existing facilities planned?

No

Classify as existing sources & Promote the use of BAT & BEP

Will construction or modification commence <1 year after entry into force for Party?

Yes

Yes

Note: The Party should consider what changes are required to investment planning & licensing for source categories in Annex C Part II

Classify as NEW sources & Promote the use of BAT & BEP **and** Require BAT no later than 4 years after entry into force for Party

No

Note: Annex C Part III does not provide an exhaustive list of potential source categories unintentionally forming & releasing POPs. The Party should consider other activities that may represent sources

Check inventory

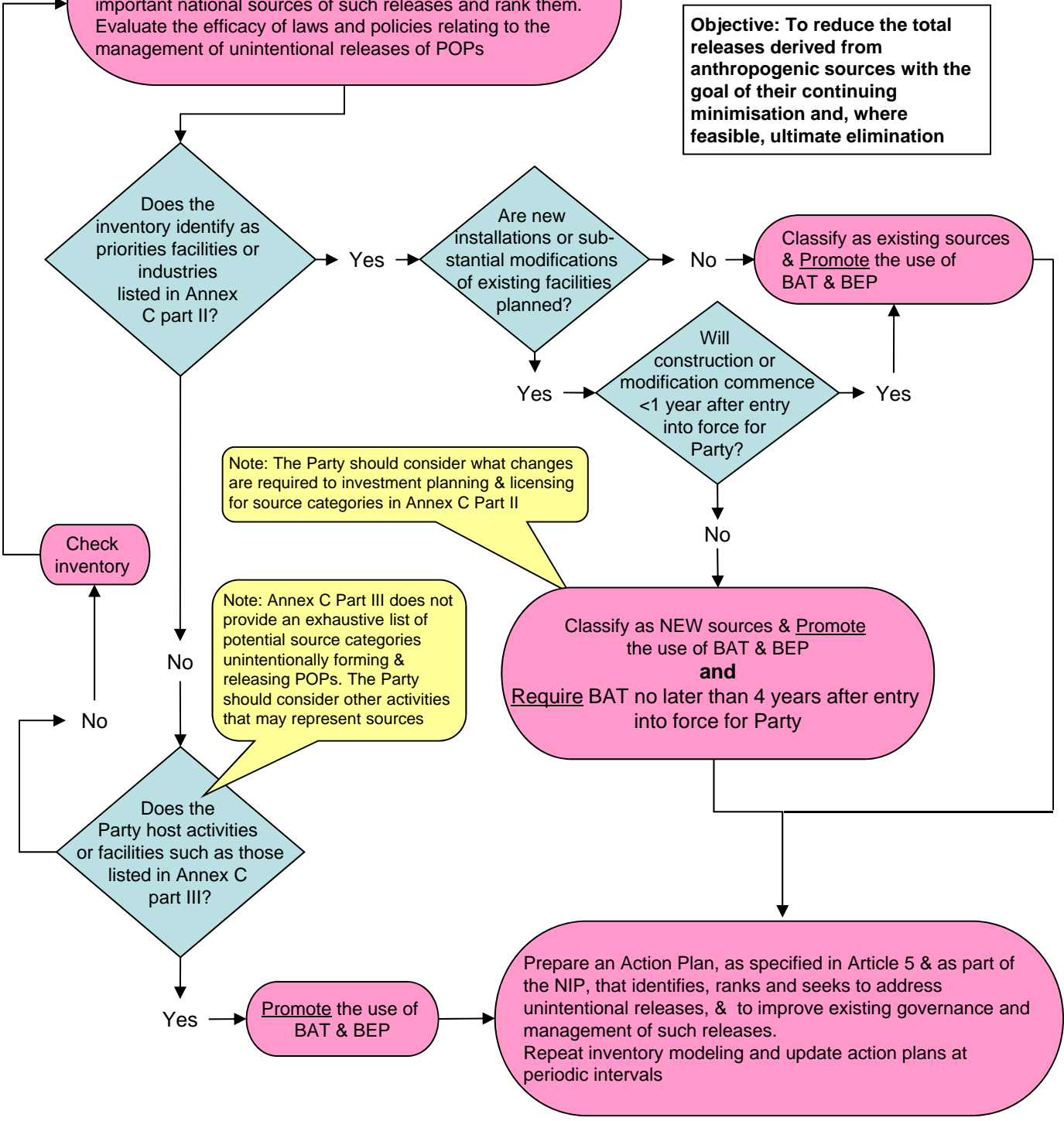
No

Does the Party host activities or facilities such as those listed in Annex C part III?

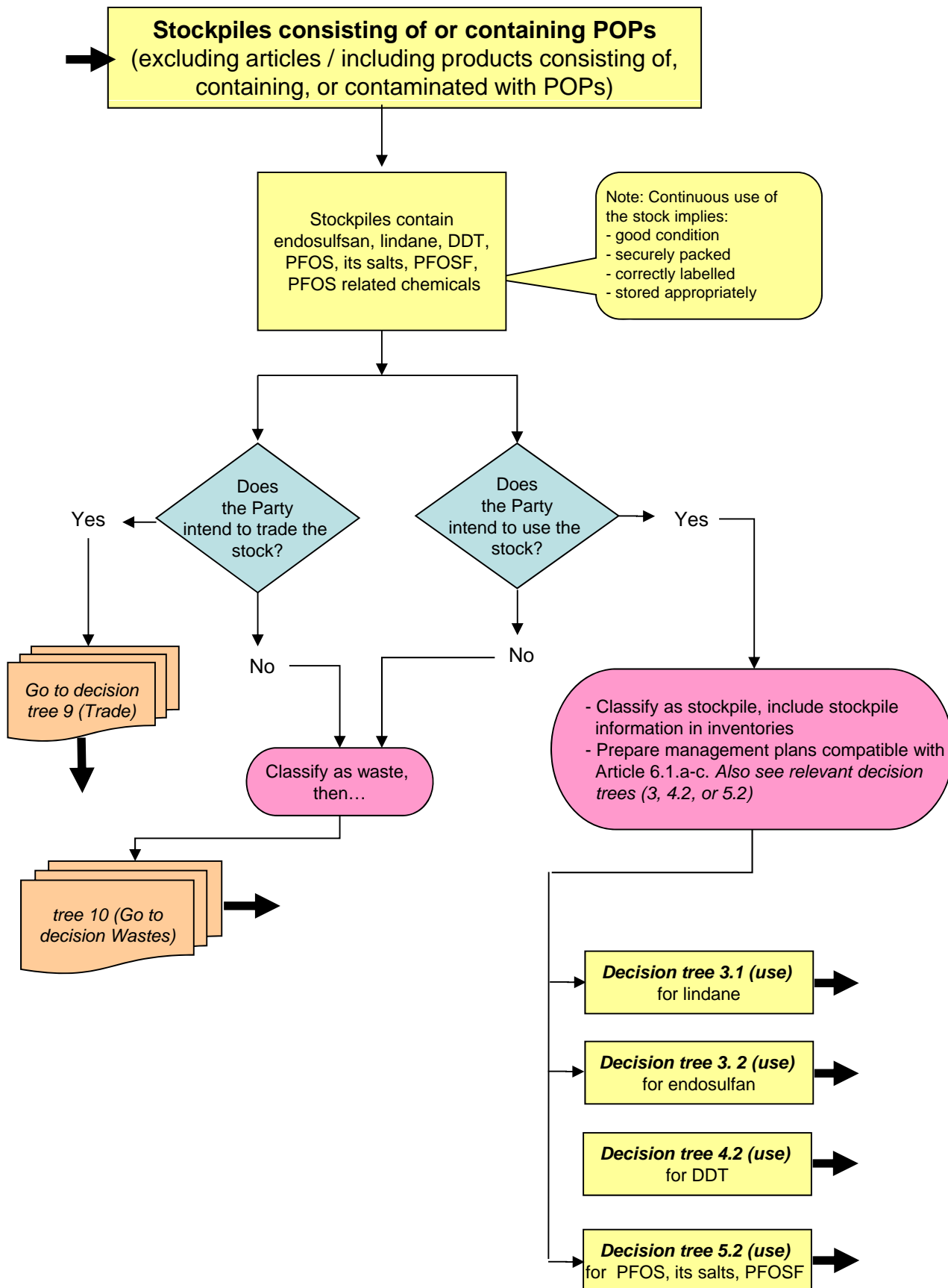
Yes

Promote the use of BAT & BEP

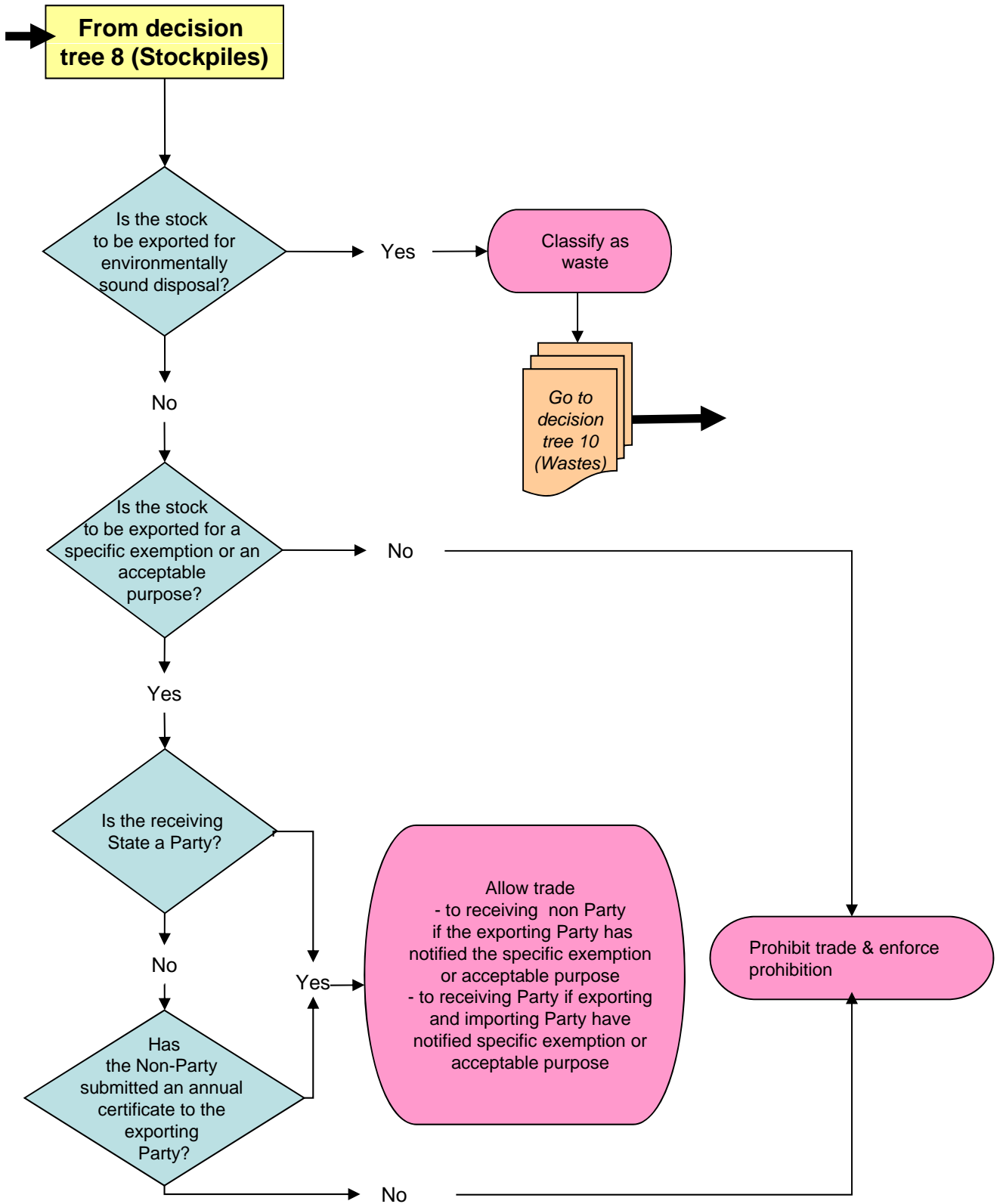
Prepare an Action Plan, as specified in Article 5 & as part of the NIP, that identifies, ranks and seeks to address unintentional releases, & to improve existing governance and management of such releases. Repeat inventory modeling and update action plans at periodic intervals



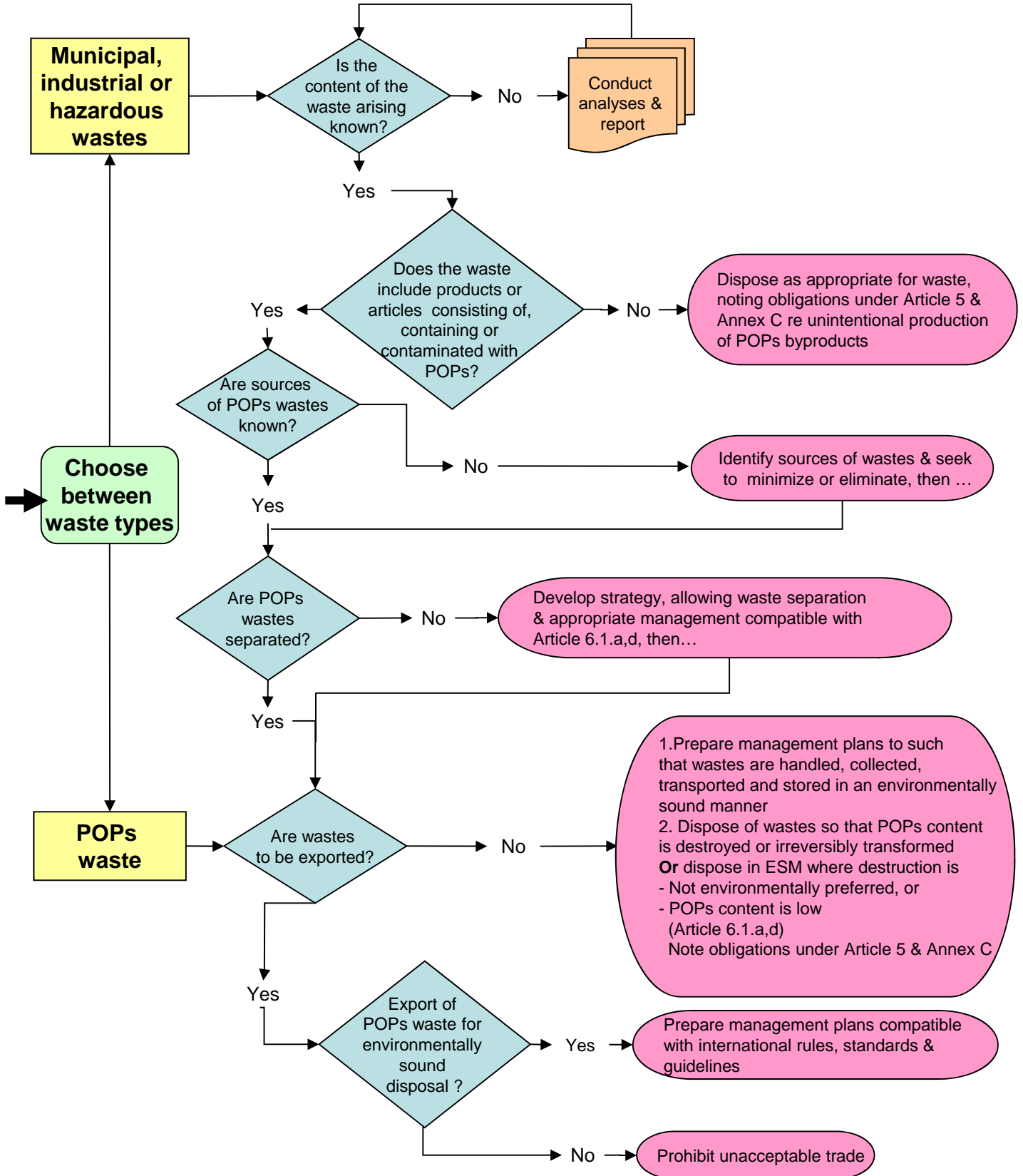
8. Stockpiles



9. Trade



10. Wastes



11. Articles containing POPs

